

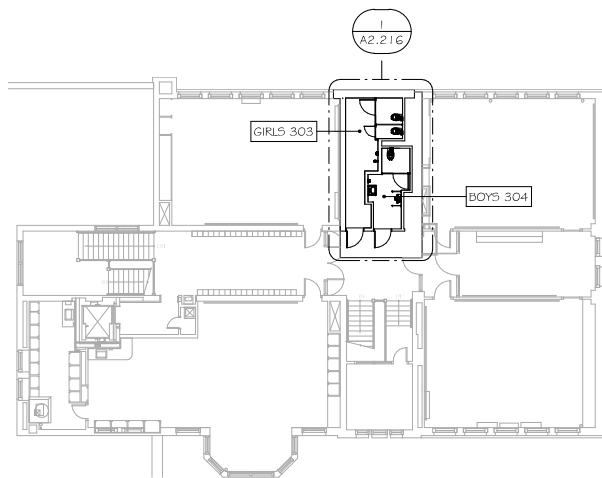
4 PERKINS SITE LOCATION MAP
1/2" = 1'-0" N↑

ROOM FINISH SCHEDULE										
NO	NAME	FLOOR	BASE	WALL - NORTH	WALL - EAST	WALL - SOUTH	WALL - WEST	CEILING - FINISH	CEILING - HEIGHT	REMARKS
122	NURSE 122	EX	VS	EX	PT	EX	EX	EX	9'-0"	
133	BOYS 133	EPT	SS	EX	EX	EX	EX	PT		
134	GIRLS 134	EPT	SS	EX	EX	EX	EX	PT		
137	CONTROL	EX	VS	EX	EX	EX	EX	EX		
138	GIRLS 138	EPT	SS	EX	EX	EX	EX	PT		
139	BOYS 139	EPT	SS	EX	EX	EX	EX	PT		
147A	HEALTH WORKSH	EPT	SS	EX	EX	EX	EX	ACT		
149	GIRLS 149	EPT	SS	CT 8"	CT 8"	CT 8"	CT 8"	ACT		
151	BOYS 151	EPT	SS	CT 8"	CT 8"	CT 8"	CT 8"	ACT		
165	CORRIDOR	EX	EX	EX	EX	EX	EX	EX		
166	BOYS 166	EPT	SS	EX	EX	EX	EX	PT		
167	CUST.	EX	EX	EX	EX	EX	EX	EX		
168	GIRLS 168	EPT	SS	EX	EX	EX	EX	PT		
205	GIRLS 205	EX	SS	EX	EX	EX	EX	ACT 1X11"		
206	BOYS 206	EX	SS	EX	EX	EX	EX	ACT 1X11"		
303	GIRLS 303	EPT	SS	EX	EX	EX	EX	PT		
304	BOYS 304	EPT	SS	EX	EX	EX	EX	PT		

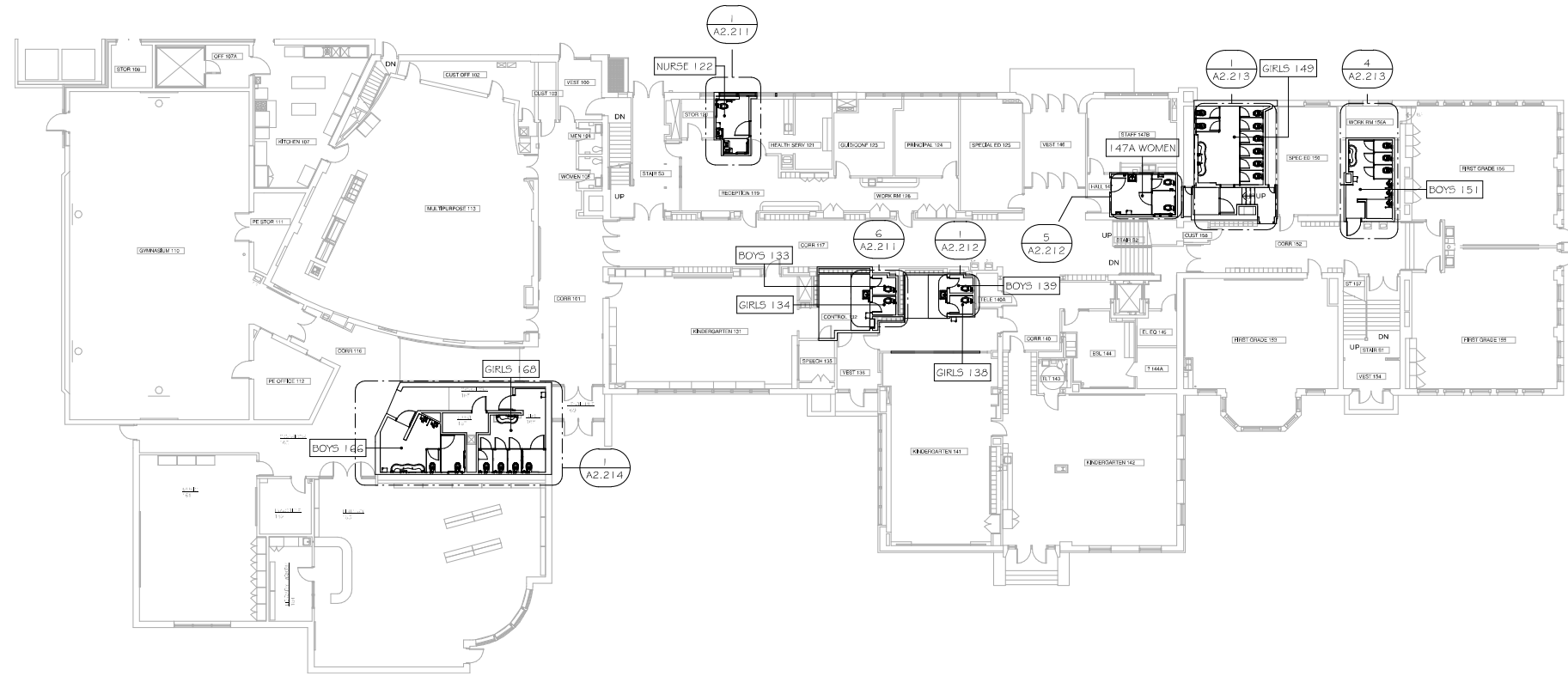
REMARKS: 1. WALL FINISH PARTIAL HEIGHT: ACT 2.2 ACOUSTICAL CEILING TILE EX 2.2 EXISTING TO REMAIN
 CT 2.2 CERAMIC TILE PT 2.2 PAINT
 CTB 2.2 CERAMIC TILE BASE SS 2.2 SOLID SURFACE
 CMC 2.2 COMPOSITE WALL COVERING TRZ 2.2 TERRAZZO BAST.FLOOR
 EPT 2.2 EPOXY FLOOR VS 2.2 CERAMIC TILE BASE

PERKINS-SHEET INDEX

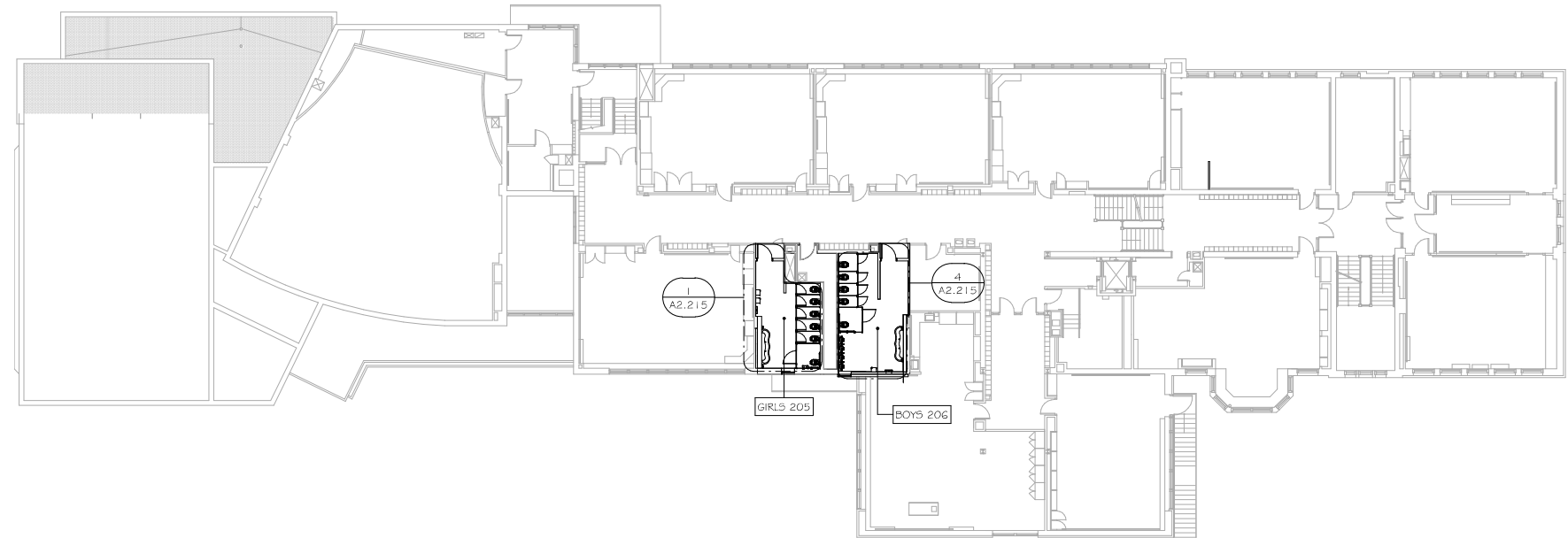
- A0.0 TITLE SHEET
- A2.210 FLOOR PLANS
- A2.211 ENLARGED PLANS 122-133-134
- A2.212 ENLARGED PLAN 138/139-147
- A2.213 ENLARGED PLAN 149 151
- A2.214 ENLARGED PLANS 166/168
- A2.215 ENLARGED PLAN 205/206
- A2.216 ENLARGED 303/304



3 3RD FLOOR
1/16" = 1'-0" N↑



1 1ST FLOOR
1/16" = 1'-0" N↑



2 2ND FLOOR
1/16" = 1'-0" N↑



1615 Golden Aspen Drive
Suite 110
Ames, Iowa 50010

515 292 6075 Phone
515 292 6370 Fax

mail@rmharchitects.com

www.rmharchitects.com

Project Number
Project Number

Print Record
Project Status 11/3/20

Revision Record

Consultant



PRELIMINARY ONLY
NOT FOR CONSTRUCTION

DMPS RESTROOM REMODEL
PERKINS ELEMENTARY SCHOOL
4301 College Ave
Des Moines, IA 50311

FLOOR PLANS