

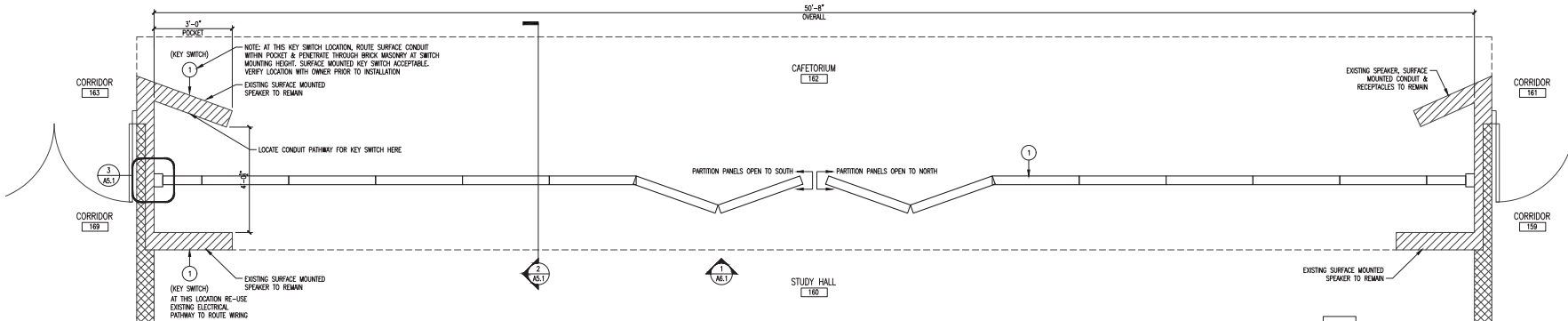
1 DEMO PLAN
SCALE: 1/2" = 1'-0"

DEMO GENERAL NOTES:

1. BOLD & DASHED LINES INDICATE ITEMS TO BE REMOVED UNLESS NOTED OTHERWISE. PATCH AND REPAIR ALL ADJACENT SURFACES TO MATCH EXISTING SURFACES AT REMOVED ITEMS. SEE OTHER TRADES AND PLANS FOR ADDITIONAL INFORMATION.
2. CONTRACTOR SHALL FIELD VERIFY ALL EXISTING CONDITIONS AND REPORT ANY DISCREPANCIES TO THE ARCHITECT.
3. ALL ABANDONED WALL SOCKETS, CHUTES AND CONDUIT FROM DEMOLISHED FINISHES & DEVICES SHALL BE PATCHED. WHERE PATCHING IS REQUIRED IT SHALL BE FINISHED TO MATCH ADJACENT SURFACES. CONTRACTOR SHALL BLEND NEW WALL TEXTURES INTO EXISTING WALL TEXTURES TO RESULT IN A UNIFORM FINISH/APPEARANCE AND, AS REQUIRED, REPAIR THE ENTIRE WALL FIELD TO RESULT IN A CONSISTENT FINISH. WHERE NO PATCH WORK IS INDICATED, THE REMAINING OPENINGS SHALL RECEIVE STAINLESS STEEL METAL BEAM PLATES OR COVERS. WHERE CUSTOM SIZED METAL FABRICATIONS ARE REQUIRED TO COVER CAVITIES, PROVIDE A MINIMUM 1/8 GAUGE MATERIAL WITH HEALED EDGES. WHERE OPENINGS LARGER THAN 16" EXIST, PROVIDE ADDITIONAL METAL STUD FRAMING SUPPORTS @ 12" O.C. AS REQUIRED.
4. CONTRACTOR SHALL COORDINATE DEMOLITION WORK WITH NEW WORK, INCLUDING COORDINATION WITH ELECTRICAL REQUIREMENTS. SEE ALL DEMO AND NEW PLANS AND DETAILS FOR ADDITIONAL SCOPE.
5. CONTRACTOR SHALL BE RESPONSIBLE FOR CLOSING ANY AND ALL NECESSARY OPENINGS TO THE BUILDING, REQUIRED TO REMOVE EXISTING ITEMS AND/OR TO BRING IN NEW ITEMS. ALL OPENINGS SHALL BE PATCHED AND FINISHED WITH MATERIALS TO MATCH THE PRE-EXISTING CONDITIONS.
6. CONTRACTOR SHALL PROTECT ALL SURFACES SHOWING TO REMAIN THROUGHOUT DEMOLITION AND CONSTRUCTION. CONTRACTOR SHALL REPAIR AND REPLACE ALL DAMAGED SURFACES & COMPONENTS THAT ARE NOT SHOWN TO BE DEMOLISHED.
7. IF UNANTICIPATED HAZARDOUS MATERIALS ARE ENCOUNTERED, DO NOT PROCEED WITH DEMOLITION. IMMEDIATELY CONTACT THE OWNER. ARCHITECT HAS NO RESPONSIBILITY FOR THE DISCOVERY, PRESENCE, HANDLING, DISPOSAL OF, OR EXPOSURE TO, HAZARDOUS MATERIALS OR TOXIC SUBSTANCES, IN ANY FORM, ON THE PROJECT SITE.

DEMO PLAN KEY NOTE LEGEND:

- 1 REMOVE MOTORIZED PARTITION: REMOVE EXISTING MOTORIZED PARTITION DOOR PANELS, TRACK, MOTOR, CONTROLS, FASTENING HARDWARE AND ALL COMPONENTS RELATED TO THE EXISTING PARTITION. A LICENSED PROFESSIONAL ELECTRICIAN SHALL BE RESPONSIBLE FOR DISCONNECTING MOTOR AND RELATED ELECTRICAL CONNECTIONS. SEE FLOOR PLAN. SEE DETAILS.
- 2 EXISTING MASONRY DOOR PANEL POCKET TO REMAIN. PROTECT ALL SURFACES & CORNER EDGES FOR DURATION OF DEMOLITION AND CONSTRUCTION.
- 3 FLOOR COVERING TO REMAIN. EXISTING TERRAZZO FLOORING TO REMAIN. PROTECT FOR DURATION OF DEMOLITION AND CONSTRUCTION.



2 FLOOR PLAN
SCALE: 1/2" = 1'-0"

GENERAL NOTES:

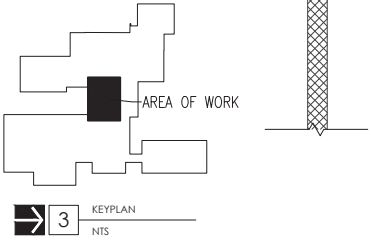
1. PLAN LAYOUT, LOCATIONS OF FIXTURES, SIZE OF COMPONENTS, HEIGHTS, SECTIONS & DETAILS WERE DERIVED FROM RECORD DRAWINGS OF THE PREVIOUS ARCHITECT & FIELD OBSERVATIONS. CONTRACTOR SHALL FIELD VERIFY ALL EXISTING CONDITIONS & REPORT ANY DISCREPANCIES TO THE ARCHITECT PRIOR TO THE START OF CONSTRUCTION.
2. CONTRACTOR SHALL PROVIDE EXPANSION JOINTS @ 24" O.C. (MINIMUM) IN GYPSUM WALLBOARD.
3. ALL VISIBLE GYPSUM AND WOOD SURFACES SHALL BE PAINTED. COLOR SELECTED BY OWNER.
4. OPERABLE PARTITION TO BE INSTALLED PER MANUFACTURER'S INSTRUCTIONS.
5. DELEGATED STRUCTURAL DESIGN: DESIGN SUPPORT BRACKETS, FASTENERS, THREADED ROD CONNECTIONS, AND ALL RELATED COMPONENTS TO MOTORIZED PARTITION TO EXISTING STEEL STRUCTURE, INCLUDING COMPREHENSIVE ENGINEERING ANALYSIS BY A QUALIFIED PROFESSIONAL ENGINEER, USING PERFORMANCE REQUIREMENTS, SECTIONS AND DESIGN CRITERIA INDICATED BY THE MANUFACTURER OF THE SELECTED MOTORIZED OPERABLE PARTITION.
6. DELEGATED ELECTRICAL DESIGN: DESIGN OF ELECTRICAL CONNECTIONS, REQUIREMENTS, PATHWAYS AND ALL ITEMS RELATING TO THE REMOVAL OF EXISTING ELECTRICAL COMPONENTS AND INSTALLATION OF NEW ELECTRICAL COMPONENTS SHALL BE DESIGNED & PROVIDED BY A LICENSED PROFESSIONAL ELECTRICIAN.
7. GC SHALL PROVIDE ADDITIONAL NOTS AS REQUESTED BY OWNER PRIOR TO PROJECT CLOSOUT.

GENERAL WALL TYPE MATCH REFERENCES:

- EXISTING CMU BLOCK
 - EXISTING BRICK MASONRY
- THIS LEGEND IS FOR VISUAL REFERENCE ONLY. CONTRACTOR SHALL FIELD VERIFY EXISTING CONDITIONS

FLOOR PLAN KEY NOTE LEGEND:

- 1 MOTORIZED OPERABLE PARTITION: PROVIDE & INSTALL A NEW MOTORIZED PARTITION, TRACK, MOTOR, CONTROLS, HARDWARE, & ELECTRICAL COMPONENTS REQUIRED FOR COMPLETE INSTALLATION. A LICENSED PROFESSIONAL ELECTRICIAN SHALL BE RESPONSIBLE FOR INSTALLING ALL RELATED ELECTRICAL EQUIPMENT. VERIFY WITH PARTITION MANUFACTURER SELECTED.
 - 2 OPERABLE PARTITION BASIS OF DESIGN: PARTITION BARRIERS USE ELECTRIC CONTINUOUSLY WIND OPERABLE PARTITION. FINISH SHALL BE SELECTED BY ARCHITECT FROM MANUFACTURER'S LIST OF STANDARD AND CUSTOM FINISHES.
- OPERATION SHALL BE KEY SWITCH CONTROLLED
- OPERABLE PARTITION ASSEMBLY AND FINISH FACE(S) SHALL MEET OR EXCEED ALL LOCAL AND STATE BUILDING CODE REGULATIONS FOR INTERIOR FINISHES. CONTRACTOR TO VERIFY CODES AND REGULATIONS WITH CODE OFFICIAL PRIOR TO ORDER AND INSTALLATION. FINISH FACE SHALL BE SELECTED FROM MANUFACTURER'S FULL LINE OF STANDARD AND CUSTOM FINISHES.



3 KEY PLAN
NOTES